



# Ikhaya Lami

Affordable homes and alternative technologies for all.

## Physical Address

Unit 7  
Campground Centre  
85 Durban Rd  
Mowbray  
7705

## Mailing Address

The Business Place  
Cwango Crescent  
New Eisleben Rd  
Phillipi  
7781

## Contact Details

Tel. 021 689 9408  
Fax. 021 689 3912  
Cell. 082 809 7818  
Email. [info@ikhayalami.org](mailto:info@ikhayalami.org)  
Web. [www.ikhayalami.org](http://www.ikhayalami.org)

Ikhayalami is stand-alone project of People's Environmental Planning. Ikhayalami's primary aim is to design and manufacture very cheap housing solutions that are easy to transport and quick to erect as a response to emergencies, especially the emergency of inadequate shelter and as transit housing in the event of a relocation partnership between Government and organized communities.

Ikhayalami also conducts research into finding cost effective alternative and appropriate technologies such as the use of solar geysers and solar lighting to potentially be incorporated into their low cost incremental housing/transit units.

Ikhayalami has designed a number of proto-types, which according to the context have different benefits. We work closely with mobilized communities of the poor in particular with the Federation of the Urban Poor (FEDUP). Various options to particular housing needs are presented and it is then up to the community to decide on the appropriate technology that best suites their reality.



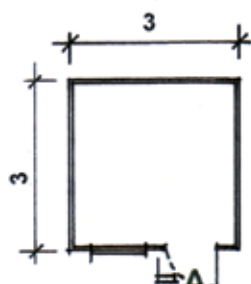
Big 6 (Not Plastered) - 36m<sup>2</sup>



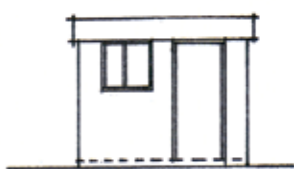
Clip Lock - 9m<sup>2</sup>

Below are drawings of the various sizes of two different prototypes and the current cost structures within the Western Cape.

The two proto-types presented here are made using either Clip Lock (C-L) 0.5mm galvanized steel or corrugated fiber cement sheeting referred to as Big 6. The cost presented alongside each drawing includes the structure with roof, door, window/s and a concrete slab of 75mm.



PLAN

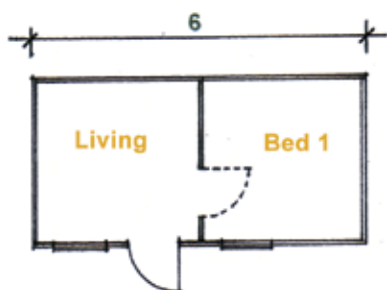


ELEVATION

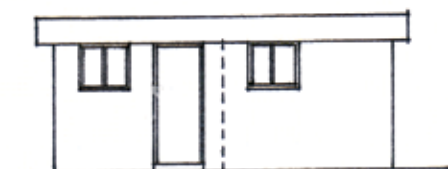


SECTION A-A

**9m<sup>2</sup>**

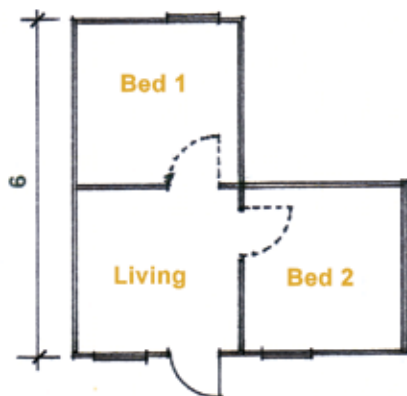


PLAN

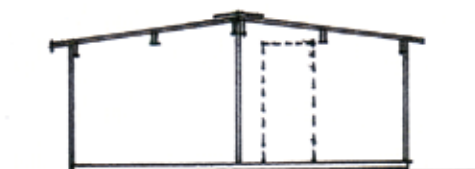


ELEVATION ( FRONT )

**18m<sup>2</sup>**



SECTION B-B



**27m<sup>2</sup>**



ELEVATION ( SIDE )



**36m<sup>2</sup>**

Can make to any size/spec.

An incremental or additional option is to clad the internal walls of the click-lock shelters with Nutec fiber cement sheeting. This improves insulation and the fire resistant qualities of the unit. The cost implications are reflected below:

**Clip-Lock** 0.5mm - galvanized steel with concrete slab 75mm plus internal cladding using 0.4mm fiber cement sheets.

With regard to the Big 6 structure there is an added advantage of being able to plaster the walls both internally and externally giving the unit the look and feel of a conventional brick house. This also improves the insulation, fire resistant qualities and makes it a very solid structure. The cost implications are reflected below:

**Big 6** (corrugated fiber cement) - with concrete slab 75mm plus plastering of outside walls.

With regard to alternative technologies should there be a need Ikahayalami advocates the use of solar geysers and affordable innovative solar lighting as a more appropriate and sustainable option to the current energy crises that we face both locally and internationally.

The cost of solar geyser 150 litre - R 3 600 excluding infrastructural connections

The cost of a unique solar-based Solid State Lighting system using white light emitting diode is R1 250. This includes two lights and capacity for light for 3 – 4 hours per household per night. In addition the solar system has a built in facility to enable cell phone charging.

Ikahayalami is committed to work with Government and poor communities to find and implement affordable innovative solutions that have the effect of vastly improving peoples living conditions so as to have a lasting positive effect on all aspects of their lives.

